

Which workplace personality are you?

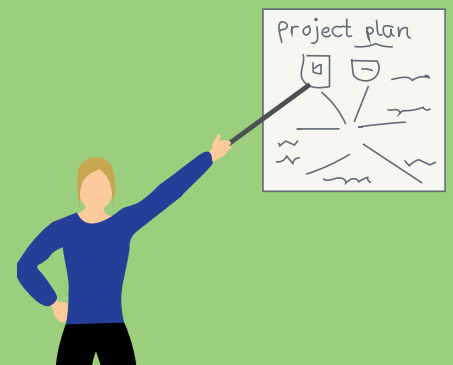
Resourceful Rachel



Tim the teamworker



Co-ordinator Carly



Peter the plant



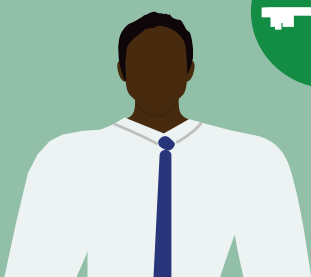
Shaper Sally



Implementer Ian



Sandy the specialist



Evaluator Edgar



Fifi the finisher



Resourceful Rachel

The resourceful investigator, you are always using your inquisitive nature to bring new and innovative ideas to the team.

Strengths: Outgoing, opportunistic, enthusiastic

Potential weaknesses: may lose interest after initial enthusiasm has passed

Tim The Teamworker

There's no 'I' in team and you know it well. You tend to use your versatility to identify the required workload and complete it on behalf of the team.

Strengths: good listener, co-operative, perceptive

Potential weaknesses: indecisive, avoids confrontation

Co-ordinator Carly

You know what is required to make your team work well and by using this knowledge, you are able to focus on the team's objectives and delegate work appropriately.

Strengths: confident, clarifies goals, identifies talent

Potential weaknesses: can over-delegate and offload too much work onto others, leaving little to do yourself

Peter The Plant

You are the creative one with all the answers to the most complex problems. People will often come to you when they feel a bit stuck and require your imaginative insight.

Strengths: free-thinking, problem solving, creative

Potential weaknesses: absent-minded, forgetful, preoccupied

Shaper Sally

Someone acting out in the team? You'll be the one to whip them into shape. As the shaper, you are the one who keeps the team moving and refuses to lose focus and momentum.

Strengths: thrives under pressure, driven

Potential weaknesses: aggressive, prone to provocation

Implementer Ian

Good ideas are useless if not implemented properly, right? You are the type of person who works out a strategy and carries it out as efficiently as possible.

Strengths: practical, reliable, organised

Potential weaknesses: rigid, slow to respond to new possibilities and changes

Sandy The Specialist

You hold the key to an area of information your colleagues can't access and you know how to use it. You can use your knowledge of a specialist area to bring something different and insightful to the table.

Strengths: dedicated, self-starting, single-minded

Potential weaknesses: can be prone to dwell on technicalities, which can overload colleagues with information

Evaluator Edgar

As logical as they come, you are not afraid to make impartial judgements and weigh up the various opinions in the team.

Strengths: strategic, discerning, able to make accurate judgements

Potential weaknesses: overly critical, can be slow to make decisions

Fifi The Finisher

You may not always start it, but you're the best person to finish it. You perform best at the end of tasks, by polishing and scrutinising work for errors to ensure the highest levels of quality control.

Strengths: Conscientious, good at spotting errors, perfectionist

Potential weaknesses: inclined to worry, reluctant to delegate, can take perfectionism to extremes

Share your personality on Twitter #FPWorkplacePersonalities